

# 1,000 COMPANIES TO INSPIRE BRITAIN

The Daily Telegraph

<p><b>NORTH WEST ENGLAND</b></p> <ul style="list-style-type: none"> <li>■ ACCROL HOLDINGS LTD consumer goods, Blackburn, £3,403,000</li> <li>■ B DUGDALE &amp; SON LTD farming, Blackburn, £37,403,000</li> <li>■ DHS HOLDINGS PLC building materials, Manchester, £12,941,300</li> <li>■ FERGUSSON ENGINEERING (HOLDINGS) LTD mechanical or industrial engineering, Blackburn, £7,527,000</li> <li>■ PANAZ HOLDINGS LTD textiles, Blackburn, £12,938,000</li> <li>■ SOLOMON HOLDINGS LTD transportation, Blackburn, £36,970,000</li> <li>■ VITAL HOLDINGS LTD utilities, Blackburn, £50,658,840</li> <li>■ GREY SKY ENERGY LTD utilities, Bolton, £54,421,000</li> <li>■ KINGDOM SECURITY LTD security and investigations, Bolton, £26,045,000</li> <li>■ ONE E GROUP LTD accounting, Bolton, £29,319,608</li> <li>■ ONSIDE NORTH WEST LTD philanthropy, Bolton, £14,459,000</li> <li>■ TI INDUSTRIAL GROUP LTD construction, Bolton, £24,009,000</li> <li>■ NARBROOK HOLDINGS LTD pharmaceuticals, Carlisle, £191,707,000</li> <li>■ HYDROKEM UK LTD chemicals, Chester, £1,025,000</li> <li>■ WEBSTER AND COMPANY LTD mechanical or industrial engineering, Chester, £6,370,000</li> <li>■ REGENDA HOMES LTD real estate, Chester, £6,258,000</li> <li>■ ROY HANKINSON (HOLDINGS) LTD construction, Chester, £16,619,377</li> <li>■ THE DESURVEY GROUP PLC staffing recruiting, Chester, £21,280,000</li> <li>■ ADVANCED MEDICAL SOLUTIONS GROUP PLC medical equipment, Crewe, £52,589,000</li> <li>■ ELECTRICITY NETWORK SOLICITORS LTD law practice, Crewe, £25,721,000</li> <li>■ FREED LTD building materials, Crewe, £6,071,000</li> <li>■ IN FUEL LTD oil and energy, Crewe, £64,070,000</li> <li>■ MEDTRADE PRODUCTS LTD medical equipment, Crewe, £10,053,000</li> <li>■ MORNING FOODS LTD food production, Crewe, £128,638,000</li> <li>■ NEWFIELD FABRICATIONS COMPANY LTD insurance, Crewe, £1,597,000</li> <li>■ ROCK MECHANICAL LTD health, wellness, fitness, Crewe, £10,505,817</li> <li>■ SANDBACH COMMERCIAL DISMANTLERS LTD civil engineering, Crewe, £26,964,516</li> <li>■ TANDOM METALLURGICAL GROUP LTD mining and metals, Crewe, £44,037,000</li> <li>■ THE HUT GROUP LTD apparel and fashion, Crewe, £157,187,000</li> <li>■ GILBERT GILKES &amp; GORDON LTD mechanical or industrial engineering, Lancaster, £29,751,000</li> <li>■ ABBEY LOGISTICS GROUP LTD transportation, Liverpool, £27,674,000</li> <li>■ BOOTH SECURITIES LTD oil and energy, Liverpool, £36,526,000</li> <li>■ BRYKEN (HOLDINGS) LTD mechanical or industrial engineering, Liverpool, £18,132,601</li> <li>■ DAMS FURNITURE LTD furniture, Liverpool, £21,959,000</li> <li>■ DIRECT ACCIDENT MANAGEMENT LTD automotive, Liverpool, £1,132,601</li> <li>■ M QUINN HOLDINGS LTD mechanical or industrial engineering, Liverpool, £70,797,000</li> <li>■ CLARE &amp; CO LTD mechanical or industrial engineering, Liverpool, £24,281,000</li> <li>■ EDGE WORLDWIDE LOGISTICS LTD logistics and supply chain, Manchester, £24,153,103</li> <li>■ DORIC ANDERTON LTD packaging and containers, Manchester, £22,981,000</li> <li>■ WORLDWIDE LOGISTICS LTD logistics and supply chain, Manchester, £24,217,000</li> <li>■ EUROLOG HOLDINGS LTD civil engineering, Manchester, £14,340,000</li> <li>■ EUROPA SUPPORT SERVICES LTD facilities services, Manchester, £142,011,000</li> <li>■ OPS HOLDINGS LTD oil and energy, Manchester, £18,498,513</li> <li>■ JAMES HALSTEAD PLC building materials, Manchester, £22,585,000</li> <li>■ KINETIC PLC staffing recruiting, Manchester, £32,174,000</li> <li>■ KIN-TEC HOLDINGS LTD staffing recruiting, Manchester, £46,467,000</li> <li>■ M&amp;I MATERIALS LTD mechanical or industrial engineering, Manchester, £29,185,000</li> <li>■ PROPERTY ALLIANCE GROUP LTD real estate, Manchester, £25,561,000</li> <li>■ PH INTERNATIONAL PLC logistics and supply chain, Manchester, £27,335,000</li> <li>■ SELECT GROUP PLC facilities services, Manchester, £9,508,000</li> <li>■ SELICK PARTNERSHIP GROUP LTD staffing recruiting, Manchester, £17,734,000</li> <li>■ STARTECH.COM LTD computer hardware, Manchester, £9,959,000</li> <li>■ SUPREME IMPORTS LTD electrical electronic manufacturing, Manchester, £34,202,000</li> <li>■ TUSCOR LLOYDS (UK) LTD logistics and supply chain, Manchester, £14,889,000</li> <li>■ WASABI FROG LTD apparel and fashion, Manchester, £29,319,608</li> <li>■ ONSIDE NORTH WEST LTD philanthropy, Bolton, £14,459,000</li> <li>■ TI INDUSTRIAL GROUP LTD construction, Bolton, £24,009,000</li> <li>■ NARBROOK HOLDINGS LTD pharmaceuticals, Carlisle, £191,707,000</li> <li>■ HYDROKEM UK LTD chemicals, Chester, £1,025,000</li> <li>■ WEBSTER AND COMPANY LTD mechanical or industrial engineering, Chester, £6,370,000</li> <li>■ REGENDA HOMES LTD real estate, Chester, £6,258,000</li> <li>■ ROY HANKINSON (HOLDINGS) LTD construction, Chester, £16,619,377</li> <li>■ THE DESURVEY GROUP PLC staffing recruiting, Chester, £21,280,000</li> <li>■ ADVANCED MEDICAL SOLUTIONS GROUP PLC medical equipment, Crewe, £52,589,000</li> <li>■ ELECTRICITY NETWORK SOLICITORS LTD law practice, Crewe, £25,721,000</li> <li>■ FREED LTD building materials, Crewe, £6,071,000</li> <li>■ IN FUEL LTD oil and energy, Crewe, £64,070,000</li> <li>■ MEDTRADE PRODUCTS LTD medical equipment, Crewe, £10,053,000</li> <li>■ MORNING FOODS LTD food production, Crewe, £128,638,000</li> <li>■ NEWFIELD FABRICATIONS COMPANY LTD insurance, Crewe, £1,597,000</li> <li>■ ROCK MECHANICAL LTD health, wellness, fitness, Crewe, £10,505,817</li> <li>■ SANDBACH COMMERCIAL DISMANTLERS LTD civil engineering, Crewe, £26,964,516</li> <li>■ TANDOM METALLURGICAL GROUP LTD mining and metals, Crewe, £44,037,000</li> <li>■ THE HUT GROUP LTD apparel and fashion, Crewe, £157,187,000</li> <li>■ GILBERT GILKES &amp; GORDON LTD mechanical or industrial engineering, Lancaster, £29,751,000</li> <li>■ ABBEY LOGISTICS GROUP LTD transportation, Liverpool, £27,674,000</li> <li>■ BOOTH SECURITIES LTD oil and energy, Liverpool, £36,526,000</li> <li>■ BRYKEN (HOLDINGS) LTD mechanical or industrial engineering, Liverpool, £18,132,601</li> <li>■ DAMS FURNITURE LTD furniture, Liverpool, £21,959,000</li> <li>■ DIRECT ACCIDENT MANAGEMENT LTD automotive, Liverpool, £1,132,601</li> <li>■ M QUINN HOLDINGS LTD mechanical or industrial engineering, Liverpool, £70,797,000</li> <li>■ CLARE &amp; CO LTD mechanical or industrial engineering, Liverpool, £24,281,000</li> <li>■ EDGE WORLDWIDE LOGISTICS LTD logistics and supply chain, Manchester, £24,153,103</li> <li>■ DORIC ANDERTON LTD packaging and containers, Manchester, £22,981,000</li> <li>■ WORLDWIDE LOGISTICS LTD logistics and supply chain, Manchester, £24,217,000</li> </ul>	<p><b>NORTH WEST</b></p> <p>69%</p> <p>Number of companies: 109</p> <p>Biggest sector: 26 Construction and real estate</p>	
<p><b>NORTH WEST ENGLAND</b></p> <ul style="list-style-type: none"> <li>■ ACCROL HOLDINGS LTD consumer goods, Blackburn, £3,403,000</li> <li>■ B DUGDALE &amp; SON LTD farming, Blackburn, £37,403,000</li> <li>■ DHS HOLDINGS PLC building materials, Manchester, £12,941,300</li> <li>■ FERGUSSON ENGINEERING (HOLDINGS) LTD mechanical or industrial engineering, Blackburn, £7,527,000</li> <li>■ PANAZ HOLDINGS LTD textiles, Blackburn, £12,938,000</li> <li>■ SOLOMON HOLDINGS LTD transportation, Blackburn, £36,970,000</li> <li>■ VITAL HOLDINGS LTD utilities, Blackburn, £50,658,840</li> <li>■ GREY SKY ENERGY LTD utilities, Bolton, £54,421,000</li> <li>■ KINGDOM SECURITY LTD security and investigations, Bolton, £26,045,000</li> <li>■ ONE E GROUP LTD accounting, Bolton, £29,319,608</li> <li>■ ONSIDE NORTH WEST LTD philanthropy, Bolton, £14,459,000</li> <li>■ TI INDUSTRIAL GROUP LTD construction, Bolton, £24,009,000</li> <li>■ NARBROOK HOLDINGS LTD pharmaceuticals, Carlisle, £191,707,000</li> <li>■ HYDROKEM UK LTD chemicals, Chester, £1,025,000</li> <li>■ WEBSTER AND COMPANY LTD mechanical or industrial engineering, Chester, £6,370,000</li> <li>■ REGENDA HOMES LTD real estate, Chester, £6,258,000</li> <li>■ ROY HANKINSON (HOLDINGS) LTD construction, Chester, £16,619,377</li> <li>■ THE DESURVEY GROUP PLC staffing recruiting, Chester, £21,280,000</li> <li>■ ADVANCED MEDICAL SOLUTIONS GROUP PLC medical equipment, Crewe, £52,589,000</li> <li>■ ELECTRICITY NETWORK SOLICITORS LTD law practice, Crewe, £25,721,000</li> <li>■ FREED LTD building materials, Crewe, £6,071,000</li> <li>■ IN FUEL LTD oil and energy, Crewe, £64,070,000</li> <li>■ MEDTRADE PRODUCTS LTD medical equipment, Crewe, £10,053,000</li> <li>■ MORNING FOODS LTD food production, Crewe, £128,638,000</li> <li>■ NEWFIELD FABRICATIONS COMPANY LTD insurance, Crewe, £1,597,000</li> <li>■ ROCK MECHANICAL LTD health, wellness, fitness, Crewe, £10,505,817</li> <li>■ SANDBACH COMMERCIAL DISMANTLERS LTD civil engineering, Crewe, £26,964,516</li> <li>■ TANDOM METALLURGICAL GROUP LTD mining and metals, Crewe, £44,037,000</li> <li>■ THE HUT GROUP LTD apparel and fashion, Crewe, £157,187,000</li> <li>■ GILBERT GILKES &amp; GORDON LTD mechanical or industrial engineering, Lancaster, £29,751,000</li> <li>■ ABBEY LOGISTICS GROUP LTD transportation, Liverpool, £27,674,000</li> <li>■ BOOTH SECURITIES LTD oil and energy, Liverpool, £36,526,000</li> <li>■ BRYKEN (HOLDINGS) LTD mechanical or industrial engineering, Liverpool, £18,132,601</li> <li>■ DAMS FURNITURE LTD furniture, Liverpool, £21,959,000</li> <li>■ DIRECT ACCIDENT MANAGEMENT LTD automotive, Liverpool, £1,132,601</li> <li>■ M QUINN HOLDINGS LTD mechanical or industrial engineering, Liverpool, £70,797,000</li> <li>■ CLARE &amp; CO LTD mechanical or industrial engineering, Liverpool, £24,281,000</li> <li>■ EDGE WORLDWIDE LOGISTICS LTD logistics and supply chain, Manchester, £24,153,103</li> <li>■ DORIC ANDERTON LTD packaging and containers, Manchester, £22,981,000</li> <li>■ WORLDWIDE LOGISTICS LTD logistics and supply chain, Manchester, £24,217,000</li> </ul>	<p><b>WALES</b></p> <ul style="list-style-type: none"> <li>■ AMERISUR RESOURCES PLC oil and energy, Cardiff, £7,461,000</li> <li>■ HAWKSWOOD METAL RECYCLING LTD environmental services, Birmingham, £37,505,000</li> <li>■ HYDRAPOWER COACHES LTD leisure and travel, Cardiff, £26,208,000</li> <li>■ NEW DIRECTIONS HOLDINGS LTD staffing recruiting, Cardiff, £15,558,000</li> <li>■ SPL SERVICES LTD logistics and supply chain, Cardiff, £14,241,000</li> <li>■ MED SUPPLIES LTD pharmaceuticals, Llandrindod Wells, £22,443,111</li> <li>■ CLWYDIAN GROUP LTD chemicals, Llandudno, £11,884,000</li> <li>■ GAIA TECHNOLOGIES PLC computer networking, Llandudno, £15,029,000</li> <li>■ GAP PERSONNEL HOLDINGS LTD staffing recruiting, Llandudno, £71,171,308</li> <li>■ TIA (GB) LTD automotive, Llandudno, £72,630,000</li> <li>■ JUST HOLDINGS LTD mechanical or industrial engineering, Newport, £8,195,000</li> <li>■ DAWNUS HOLDINGS LTD legal services, Swansea, £17,989,000</li> <li>■ INVESTMENTS LTD investment management, Swansea, £9,135,000</li> <li>■ TINOPOLIS LTD telecommunications, Swansea, £73,792,000</li> <li>■ TROJAN ELECTRONICS LTD electrical electronic manufacturing, Swansea, £7,830,000</li> </ul>	<p><b>WALES</b></p> <p>75%</p> <p>Number of companies: 16</p> <p>Biggest sector: 2 Construction and real estate</p>
<p><b>NORTH WEST ENGLAND</b></p> <ul style="list-style-type: none"> <li>■ ACCROL HOLDINGS LTD consumer goods, Blackburn, £3,403,000</li> <li>■ B DUGDALE &amp; SON LTD farming, Blackburn, £37,403,000</li> <li>■ DHS HOLDINGS PLC building materials, Manchester, £12,941,300</li> <li>■ FERGUSSON ENGINEERING (HOLDINGS) LTD mechanical or industrial engineering, Blackburn, £7,527,000</li> <li>■ PANAZ HOLDINGS LTD textiles, Blackburn, £12,938,000</li> <li>■ SOLOMON HOLDINGS LTD transportation, Blackburn, £36,970,000</li> <li>■ VITAL HOLDINGS LTD utilities, Blackburn, £50,658,840</li> <li>■ GREY SKY ENERGY LTD utilities, Bolton, £54,421,000</li> <li>■ KINGDOM SECURITY LTD security and investigations, Bolton, £26,045,000</li> <li>■ ONE E GROUP LTD accounting, Bolton, £29,319,608</li> <li>■ ONSIDE NORTH WEST LTD philanthropy, Bolton, £14,459,000</li> <li>■ TI INDUSTRIAL GROUP LTD construction, Bolton, £24,009,000</li> <li>■ NARBROOK HOLDINGS LTD pharmaceuticals, Carlisle, £191,707,000</li> <li>■ HYDROKEM UK LTD chemicals, Chester, £1,025,000</li> <li>■ WEBSTER AND COMPANY LTD mechanical or industrial engineering, Chester, £6,370,000</li> <li>■ REGENDA HOMES LTD real estate, Chester, £6,258,000</li> <li>■ ROY HANKINSON (HOLDINGS) LTD construction, Chester, £16,619,377</li> <li>■ THE DESURVEY GROUP PLC staffing recruiting, Chester, £21,280,000</li> <li>■ ADVANCED MEDICAL SOLUTIONS GROUP PLC medical equipment, Crewe, £52,589,000</li> <li>■ ELECTRICITY NETWORK SOLICITORS LTD law practice, Crewe, £25,721,000</li> <li>■ FREED LTD building materials, Crewe, £6,071,000</li> <li>■ IN FUEL LTD oil and energy, Crewe, £64,070,000</li> <li>■ MEDTRADE PRODUCTS LTD medical equipment, Crewe, £10,053,000</li> <li>■ MORNING FOODS LTD food production, Crewe, £128,638,000</li> <li>■ NEWFIELD FABRICATIONS COMPANY LTD insurance, Crewe, £1,597,000</li> <li>■ ROCK MECHANICAL LTD health, wellness, fitness, Crewe, £10,505,817</li> <li>■ SANDBACH COMMERCIAL DISMANTLERS LTD civil engineering, Crewe, £26,964,516</li> <li>■ TANDOM METALLURGICAL GROUP LTD mining and metals, Crewe, £44,037,000</li> <li>■ THE HUT GROUP LTD apparel and fashion, Crewe, £157,187,000</li> <li>■ GILBERT GILKES &amp; GORDON LTD mechanical or industrial engineering, Lancaster, £29,751,000</li> <li>■ ABBEY LOGISTICS GROUP LTD transportation, Liverpool, £27,674,000</li> <li>■ BOOTH SECURITIES LTD oil and energy, Liverpool, £36,526,000</li> <li>■ BRYKEN (HOLDINGS) LTD mechanical or industrial engineering, Liverpool, £18,132,601</li> <li>■ DAMS FURNITURE LTD furniture, Liverpool, £21,959,000</li> <li>■ DIRECT ACCIDENT MANAGEMENT LTD automotive, Liverpool, £1,132,601</li> <li>■ M QUINN HOLDINGS LTD mechanical or industrial engineering, Liverpool, £70,797,000</li> <li>■ CLARE &amp; CO LTD mechanical or industrial engineering, Liverpool, £24,281,000</li> <li>■ EDGE WORLDWIDE LOGISTICS LTD logistics and supply chain, Manchester, £24,153,103</li> <li>■ DORIC ANDERTON LTD packaging and containers, Manchester, £22,981,000</li> <li>■ WORLDWIDE LOGISTICS LTD logistics and supply chain, Manchester, £24,217,000</li> </ul>	<p><b>NORTHERN IRELAND</b></p> <p>71%</p> <p>Number of companies: 22</p> <p>Biggest sector: 9 Construction and real estate</p>	
<p><b>NORTH WEST ENGLAND</b></p> <ul style="list-style-type: none"> <li>■ ACCROL HOLDINGS LTD consumer goods, Blackburn, £3,403,000</li> <li>■ B DUGDALE &amp; SON LTD farming, Blackburn, £37,403,000</li> <li>■ DHS HOLDINGS PLC building materials, Manchester, £12,941,300</li> <li>■ FERGUSSON ENGINEERING (HOLDINGS) LTD mechanical or industrial engineering, Blackburn, £7,527,000</li> <li>■ PANAZ HOLDINGS LTD textiles, Blackburn, £12,938,000</li> <li>■ SOLOMON HOLDINGS LTD transportation, Blackburn, £36,970,000</li> <li>■ VITAL HOLDINGS LTD utilities, Blackburn, £50,658,840</li> <li>■ GREY SKY ENERGY LTD utilities, Bolton, £54,421,000</li> <li>■ KINGDOM SECURITY LTD security and investigations, Bolton, £26,045,000</li> <li>■ ONE E GROUP LTD accounting, Bolton, £29,319,608</li> <li>■ ONSIDE NORTH WEST LTD philanthropy, Bolton, £14,459,000</li> <li>■ TI INDUSTRIAL GROUP LTD construction, Bolton, £24,009,000</li> <li>■ NARBROOK HOLDINGS LTD pharmaceuticals, Carlisle, £191,707,000</li> <li>■ HYDROKEM UK LTD chemicals, Chester, £1,025,000</li> <li>■ WEBSTER AND COMPANY LTD mechanical or industrial engineering, Chester, £6,370,000</li> <li>■ REGENDA HOMES LTD real estate, Chester, £6,258,000</li> <li>■ ROY HANKINSON (HOLDINGS) LTD construction, Chester, £16,619,377</li> <li>■ THE DESURVEY GROUP PLC staffing recruiting, Chester, £21,280,000</li> <li>■ ADVANCED MEDICAL SOLUTIONS GROUP PLC medical equipment, Crewe, £52,589,000</li> <li>■ ELECTRICITY NETWORK SOLICITORS LTD law practice, Crewe, £25,721,000</li> <li>■ FREED LTD building materials, Crewe, £6,071,000</li> <li>■ IN FUEL LTD oil and energy, Crewe, £64,070,000</li> <li>■ MEDTRADE PRODUCTS LTD medical equipment, Crewe, £10,053,000</li> <li>■ MORNING FOODS LTD food production, Crewe, £128,638,000</li> <li>■ NEWFIELD FABRICATIONS COMPANY LTD insurance, Crewe, £1,597,000</li> <li>■ ROCK MECHANICAL LTD health, wellness, fitness, Crewe, £10,505,817</li> <li>■ SANDBACH COMMERCIAL DISMANTLERS LTD civil engineering, Crewe, £26,964,516</li> <li>■ TANDOM METALLURGICAL GROUP LTD mining and metals, Crewe, £44,037,000</li> <li>■ THE HUT GROUP LTD apparel and fashion, Crewe, £157,187,000</li> <li>■ GILBERT GILKES &amp; GORDON LTD mechanical or industrial engineering, Lancaster, £29,751,000</li> <li>■ ABBEY LOGISTICS GROUP LTD transportation, Liverpool, £27,674,000</li> <li>■ BOOTH SECURITIES LTD oil and energy, Liverpool, £36,526,000</li> <li>■ BRYKEN (HOLDINGS) LTD mechanical or industrial engineering, Liverpool, £18,132,601</li> <li>■ DAMS FURNITURE LTD furniture, Liverpool, £21,959,000</li> <li>■ DIRECT ACCIDENT MANAGEMENT LTD automotive, Liverpool, £1,132,601</li> <li>■ M QUINN HOLDINGS LTD mechanical or industrial engineering, Liverpool, £70,797,000</li> <li>■ CLARE &amp; CO LTD mechanical or industrial engineering, Liverpool, £24,281,000</li> <li>■ EDGE WORLDWIDE LOGISTICS LTD logistics and supply chain, Manchester, £24,153,103</li> <li>■ DORIC ANDERTON LTD packaging and containers, Manchester, £22,981,000</li> <li>■ WORLDWIDE LOGISTICS LTD logistics and supply chain, Manchester, £24,217,000</li> </ul>	<p><b>WEST MIDLANDS</b></p> <p>80%</p> <p>Number of companies: 81</p> <p>Biggest sector: 33 Engineering, defence and aerospace</p>	
<p><b>NORTH WEST ENGLAND</b></p> <ul style="list-style-type: none"> <li>■ ACCROL HOLDINGS LTD consumer goods, Blackburn, £3,403,000</li> <li>■ B DUGDALE &amp; SON LTD farming, Blackburn, £37,403,000</li> <li>■ DHS HOLDINGS PLC building materials, Manchester, £12,941,300</li> <li>■ FERGUSSON ENGINEERING (HOLDINGS) LTD mechanical or industrial engineering, Blackburn, £7,527,000</li> <li>■ PANAZ HOLDINGS LTD textiles, Blackburn, £12,938,000</li> <li>■ SOLOMON HOLDINGS LTD transportation, Blackburn, £36,970,000</li> <li>■ VITAL HOLDINGS LTD utilities, Blackburn, £50,658,840</li> <li>■ GREY SKY ENERGY LTD utilities, Bolton, £54,421,000</li> <li>■ KINGDOM SECURITY LTD security and investigations, Bolton, £26,045,000</li> <li>■ ONE E GROUP LTD accounting, Bolton, £29,319,608</li> <li>■ ONSIDE NORTH WEST LTD philanthropy, Bolton, £14,459,000</li> <li>■ TI INDUSTRIAL GROUP LTD construction, Bolton, £24,009,000</li> <li>■ NARBROOK HOLDINGS LTD pharmaceuticals, Carlisle, £191,707,000</li> <li>■ HYDROKEM UK LTD chemicals, Chester, £1,025,000</li> <li>■ WEBSTER AND COMPANY LTD mechanical or industrial engineering, Chester, £6,370,000</li> <li>■ REGENDA HOMES LTD real estate, Chester, £6,258,000</li> <li>■ ROY HANKINSON (HOLDINGS) LTD construction, Chester, £16,619,377</li> <li>■ THE DESURVEY GROUP PLC staffing recruiting, Chester, £21,280,000</li> <li>■ ADVANCED MEDICAL SOLUTIONS GROUP PLC medical equipment, Crewe, £52,589,000</li> <li>■ ELECTRICITY NETWORK SOLICITORS LTD law practice, Crewe, £25,721,000</li> <li>■ FREED LTD building materials, Crewe, £6,071,000</li> <li>■ IN FUEL LTD oil and energy, Crewe, £64,070,000</li> <li>■ MEDTRADE PRODUCTS LTD medical equipment, Crewe, £10,053,000</li> <li>■ MORNING FOODS LTD food production, Crewe, £128,638,000</li> <li>■ NEWFIELD FABRICATIONS COMPANY LTD insurance, Crewe, £1,597,000</li> <li>■ ROCK MECHANICAL LTD health, wellness, fitness, Crewe, £10,505,817</li> <li>■ SANDBACH COMMERCIAL DISMANTLERS LTD civil engineering, Crewe, £26,964,516</li> <li>■ TANDOM METALLURGICAL GROUP LTD mining and metals, Crewe, £44,037,000</li> <li>■ THE HUT GROUP LTD apparel and fashion, Crewe, £157,187,000</li> <li>■ GILBERT GILKES &amp; GORDON LTD mechanical or industrial engineering, Lancaster, £29,751,000</li> <li>■ ABBEY LOGISTICS GROUP LTD transportation, Liverpool, £27,674,000</li> <li>■ BOOTH SECURITIES LTD oil and energy, Liverpool, £36,526,000</li> <li>■ BRYKEN (HOLDINGS) LTD mechanical or industrial engineering, Liverpool, £18,132,601</li> <li>■ DAMS FURNITURE LTD furniture, Liverpool, £21,959,000</li> <li>■ DIRECT ACCIDENT MANAGEMENT LTD automotive, Liverpool, £1,132,601</li> <li>■ M QUINN HOLDINGS LTD mechanical or industrial engineering, Liverpool, £70,797,000</li> <li>■ CLARE &amp; CO LTD mechanical or industrial engineering, Liverpool, £24,281,000</li> <li>■ EDGE WORLDWIDE LOGISTICS LTD logistics and supply chain, Manchester, £24,153,103</li> <li>■ DORIC ANDERTON LTD packaging and containers, Manchester, £22,981,000</li> <li>■ WORLDWIDE LOGISTICS LTD logistics and supply chain, Manchester, £24,217,000</li> </ul>	<p><b>SOUTH WEST</b></p> <p>100%</p> <p>Number of companies: 72</p> <p>Biggest sector: 16 Construction and real estate</p>	
<p><b>NORTH WEST ENGLAND</b></p> <ul style="list-style-type: none"> <li>■ ACCROL HOLDINGS LTD consumer goods, Blackburn, £3,403,000</li> <li>■ B DUGDALE &amp; SON LTD farming, Blackburn, £37,403,000</li> <li>■ DHS HOLDINGS PLC building materials, Manchester, £12,941,300</li> <li>■ FERGUSSON ENGINEERING (HOLDINGS) LTD mechanical or industrial engineering, Blackburn, £7,527,000</li> <li>■ PANAZ HOLDINGS LTD textiles, Blackburn, £12,938,000</li> <li>■ SOLOMON HOLDINGS LTD transportation, Blackburn, £36,970,000</li> <li>■ VITAL HOLDINGS LTD utilities, Blackburn, £50,658,840</li> <li>■ GREY SKY ENERGY LTD utilities, Bolton, £54,421,000</li> <li>■ KINGDOM SECURITY LTD security and investigations, Bolton, £26,045,000</li> <li>■ ONE E GROUP LTD accounting, Bolton, £29,319,608</li> <li>■ ONSIDE NORTH WEST LTD philanthropy, Bolton, £14,459,000</li> <li>■ TI INDUSTRIAL GROUP LTD construction, Bolton, £24,009,000</li> <li>■ NARBROOK HOLDINGS LTD pharmaceuticals, Carlisle, £191,707,000</li> <li>■ HYDROKEM UK LTD chemicals, Chester, £1,025,000</li> <li>■ WEBSTER AND COMPANY LTD mechanical or industrial engineering, Chester, £6,370,000</li> <li>■ REGENDA HOMES LTD real estate, Chester, £6,258,000</li> <li>■ ROY HANKINSON (HOLDINGS) LTD construction, Chester, £16,619,377</li> <li>■ THE DESURVEY GROUP PLC staffing recruiting, Chester, £21,280,000</li> <li>■ ADVANCED MEDICAL SOLUTIONS GROUP PLC medical equipment, Crewe, £52,589,000</li> <li>■ ELECTRICITY NETWORK SOLICITORS LTD law practice, Crewe, £25,721,000</li> <li>■ FREED LTD building materials, Crewe, £6,071,000</li> <li>■ IN FUEL LTD oil and energy, Crewe, £64,070,000</li> <li>■ MEDTRADE PRODUCTS LTD medical equipment, Crewe, £10,053,000</li> <li>■ MORNING FOODS LTD food production, Crewe, £128,638,000</li> <li>■ NEWFIELD FABRICATIONS COMPANY LTD insurance, Crewe, £1,597,000</li> <li>■ ROCK MECHANICAL LTD health, wellness, fitness, Crewe, £10,505,817</li> <li>■ SANDBACH COMMERCIAL DISMANTLERS LTD civil engineering, Crewe, £26,964,516</li> <li>■ TANDOM METALLURGICAL GROUP LTD mining and metals, Crewe, £44,037,000</li> <li>■ THE HUT GROUP LTD apparel and fashion, Crewe, £157,187,000</li> <li>■ GILBERT GILKES &amp; GORDON LTD mechanical or industrial engineering, Lancaster, £29,751,000</li> <li>■ ABBEY LOGISTICS GROUP LTD transportation, Liverpool, £27,674,000</li> <li>■ BOOTH SECURITIES LTD oil and energy, Liverpool, £36,526,000</li> <li>■ BRYKEN (HOLDINGS) LTD mechanical or industrial engineering, Liverpool, £18,132,601</li> <li>■ DAMS FURNITURE LTD furniture, Liverpool, £21,959,000</li> <li>■ DIRECT ACCIDENT MANAGEMENT LTD automotive, Liverpool, £1,132,601</li> <li>■ M QUINN HOLDINGS LTD mechanical or industrial engineering, Liverpool, £70,797,000</li> <li>■ CLARE &amp; CO LTD mechanical or industrial engineering, Liverpool, £24,281,000</li> <li>■ EDGE WORLDWIDE LOGISTICS LTD logistics and supply chain, Manchester, £24,153,103</li> <li>■ DORIC ANDERTON LTD packaging and containers, Manchester, £22,981,000</li> <li>■ WORLDWIDE LOGISTICS LTD logistics and supply chain, Manchester, £24,217,000</li> </ul>	<p><b>SOUTH EAST</b></p> <p>96%</p> <p>Number of companies: 127</p> <p>Biggest sector: 24 Engineering, defence and aerospace</p>	

## How were the 1,000 companies chosen?

The London Stock Exchange found its 1,000 Companies to Inspire Britain with the help of Growth Intelligence, a technology firm that monitors the performance activity of every registered business in the UK.

Together, the LSE and Growth Intelligence drew up a set of identifying factors. Eligible companies had to show revenue growth in at least three of the past four years, in addition to outperforming their rivals in the same sector.

Other factors ignored turnover after thought, assessing businesses by increase in employee numbers, expansion of work space, and by the number of patents filed.

“At the core of the methodology was relative growth,” says Tom Gatten, chief executive and founder of Growth Intelligence. “We were looking for companies that were growing much faster than their peers.”

Growth Intelligence uses a sophisticated system to track, in real time, the signals of three million UK businesses. An army of web crawlers is used to gather “exhaust data” – the traces that are left behind whenever a company is mentioned or carries out activities online.

“We pull in about a quarter of a million pieces of text that appear on the web, new every day,” says Mr Gatten. “Blog articles, news articles, companies’ own web sites, social media posts – all sorts of stuff. And then we have a system that reads the articles and understands them.”

The software that processes this data is able to tell the difference between, for example, a company discussing the need for investment and one mentioning actual investment plans.

By Mr Gatten’s own admission, his organisation isn’t able to pinpoint turnover “to the last decimal point”. However, by drawing on information from hundreds of thousands of sources, it is able to build up a highly detailed picture of a company’s performance. Growth Intelligence then uses this information to help its clients be more efficient with their sales, targeting likely new customers.

At times, Growth Intelligence uses detective work as part of its analysis. For example, it can track the number of PCs that are connected to the internet at a specific business. In certain sectors this will roughly correlate with the number of employees in the firm.

“Growth is not a simple thing,” says Mr Gatten. “You can’t look solely at turnover growth – or all the companies on your list will be recruitment firms.

There are some entries on this list whose numbers are less immediately impressive than those with the largest annual turnover. But by comparing the statistics for each company to those in the same industry, Growth Intelligence was able to find the most successful, fastest-growing businesses for each sector.

Their final list highlights the firms that are spearheading the UK’s economic recovery – the 1,000 Companies to Inspire Britain.

Neon Kelly

**GROWTH INTELLIGENCE**

- EVER 2420 LTD leisure and travel, Hemel Hempstead, £69,685,000
- FOCUSRITE AUDIO LTD music, Hemel Hempstead, £25,270,000
- GYRON INTERNET LTD information technology, Hemel Hempstead, £26,716,000
- HUGHES AND SALVIDGE HOLDINGS LTD construction, Portsmouth, £25,490,000
- GUNDEL LTD mechanical or industrial engineering, Portsmouth, £26,716,000
- HUGHES AND SALVIDGE HOLDINGS LTD construction, Portsmouth, £25,490,000
- LIQUID FRIDAY LTD information technology, Portsmouth, £26,716,000
- INDUSTRIAL RUBBER LTD mechanical or industrial engineering, Portsmouth, £26,716,000
- THE INJURY CARE CLINICS LTD health, wellness, fitness, Portsmouth, £26,716,000
- OAKMAN INNS AND RESTAURANTS LTD restaurants, Hemel Hempstead, £7,559,000
- QUANTA LTD mechanical or industrial engineering, Hemel Hempstead, £197,429,000
- STANCY SERVICES LTD staffing and recruiting, Hemel Hempstead, £46,001,000
- MAPIL TOPCO LTD retail, Portsmouth, £140,764,000
- PORTFOLIO PLC information technology, Portsmouth, £17,652,000
- JUDGES SCIENTIFIC PLC electrical electronic manufacturing, Redhill, £28,041,000
- BORAHRUST LTD construction, Redhill, £11,691,000
- FIRST CENTRAL INSURANCE MANAGEMENT LTD insurance, Southampton, £18,915,000
- INTERNATIONAL FREIGHT CONSULTANCY LTD logistics and supply chain, Redhill, £17,652,000
- JUDGES SCIENTIFIC PLC electrical electronic manufacturing, Redhill, £28,041,000
- BORAHRUST LTD construction, Redhill, £11,691,000
- FIRST CENTRAL INSURANCE MANAGEMENT LTD insurance, Southampton, £18,915,000
- INTERNATIONAL FREIGHT CONSULTANCY LTD logistics and supply chain, Redhill, £17,652,000
- JUDGES SCIENTIFIC PLC electrical electronic manufacturing, Redhill, £28,041,000
- BORAHRUST LTD construction, Redhill, £11,691,000
- FIRST CENTRAL INSURANCE MANAGEMENT LTD insurance, Southampton, £18,915,000
- INTERNATIONAL FREIGHT CONSULTANCY LTD logistics and supply chain, Redhill, £17,652,000
- JUDGES SCIENTIFIC PLC electrical electronic manufacturing, Redhill, £28,041,000
- BORAHRUST LTD construction, Redhill, £11,691,000
- FIRST CENTRAL INSURANCE MANAGEMENT LTD insurance, Southampton, £18,915,000
- INTERNATIONAL FREIGHT CONSULTANCY LTD logistics and supply chain, Redhill, £17,652,000
- JUDGES SCIENTIFIC PLC electrical electronic manufacturing, Redhill, £28,041,000
- BORAHRUST LTD construction, Redhill, £11,691,000
- FIRST CENTRAL INSURANCE MANAGEMENT LTD insurance, Southampton, £18,915,000
- INTERNATIONAL FREIGHT CONSULTANCY LTD logistics and supply chain, Redhill, £17,652,000
- JUDGES SCIENTIFIC PLC electrical electronic manufacturing, Redhill, £28,041,000
- BORAHRUST LTD construction, Redhill, £11,691,000
- FIRST CENTRAL INSURANCE MANAGEMENT LTD insurance, Southampton, £18,915,000
- INTERNATIONAL FREIGHT CONSULTANCY LTD logistics and supply chain, Redhill, £17,652,000
- JUDGES SCIENTIFIC PLC electrical electronic manufacturing, Redhill, £28,041,000
- BORAHRUST LTD construction, Redhill, £11,691,000
- FIRST CENTRAL INSURANCE MANAGEMENT LTD insurance, Southampton, £18,915,000
- INTERNATIONAL FREIGHT CONSULTANCY LTD logistics and supply chain, Redhill, £17,652,000
- JUDGES SCIENTIFIC PLC electrical electronic manufacturing, Redhill, £28,041,000
- BORAHRUST LTD construction, Redhill, £11,691,000
- FIRST CENTRAL INSURANCE MANAGEMENT LTD insurance, Southampton, £18,915,000
- INTERNATIONAL FREIGHT CONSULTANCY LTD logistics and supply chain, Redhill, £17,652,000
- JUDGES SCIENTIFIC PLC electrical electronic manufacturing, Redhill, £28,041,000
- BORAHRUST LTD construction, Redhill,

The Daily Telegraph

Table listing various companies and their details, including names, sectors, and locations. Includes categories like 'EAST OF ENGLAND' and 'EAST MIDLANDS'.

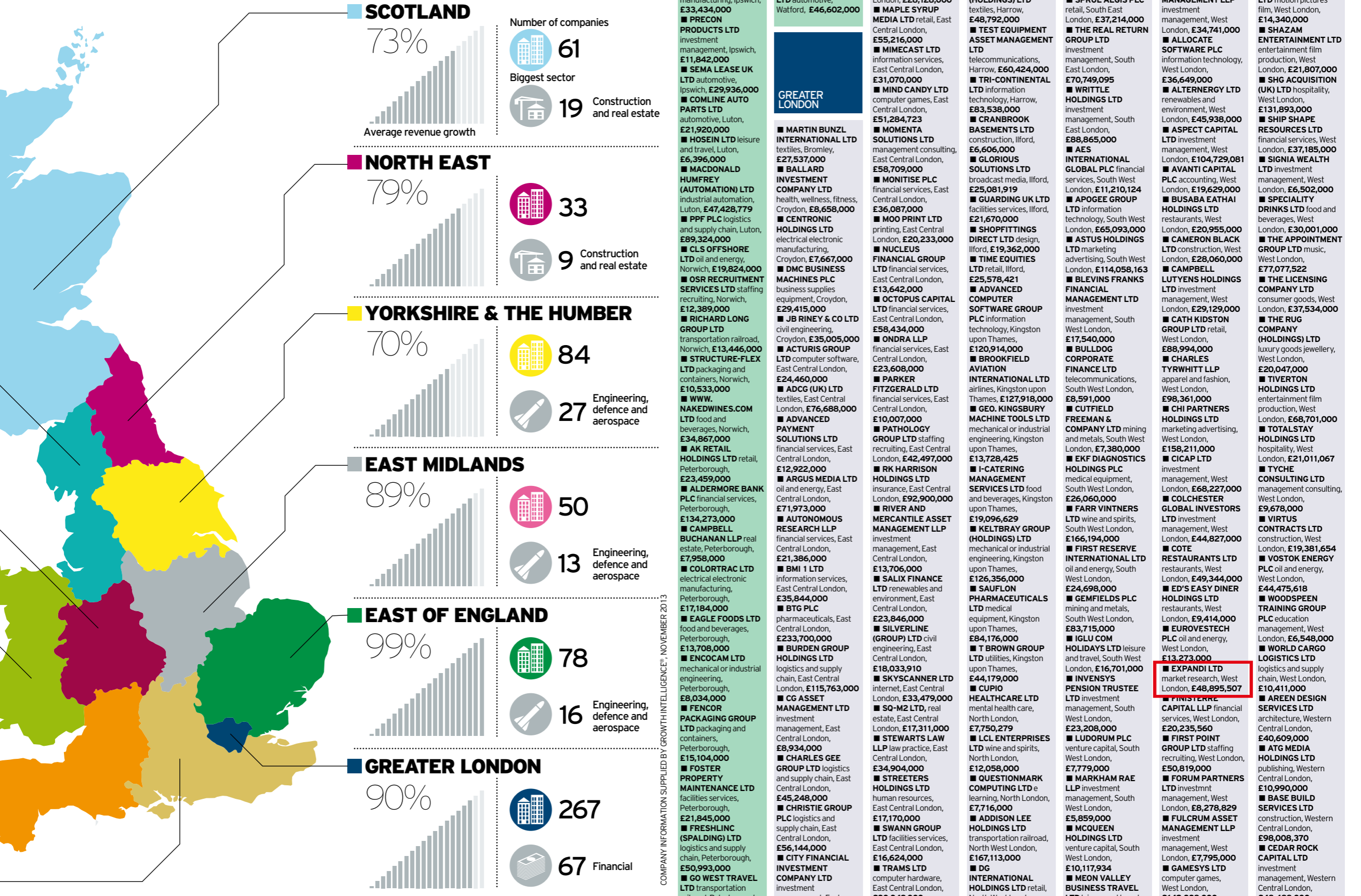


Table listing various companies and their details, including names, sectors, and locations. Includes categories like 'YORKSHIRE AND THE HUMBER', 'EAST OF ENGLAND', and 'GREATER LONDON'.

Figures in bold refer to most recent recorded turnover